

# PASSIVE INFRARED MOTION SENSOR

SEN-HC-SR501



This passive infrared motion sensor is characterized by its adjustable sensitivity, hold time and pulse rate, allowing this sensor to be perfectly adapted to your project. It has a maximum range of 7 m with a viewing angle of less than 120°.

## MAIN FEATURES

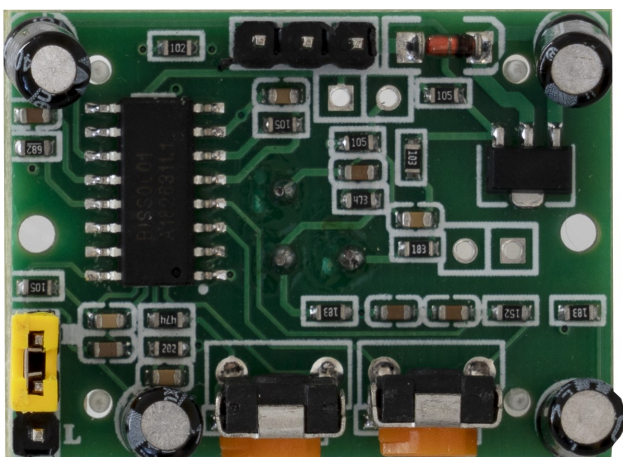
Coverage	Max. 7 m
Angle of vision	< 120 °
Compatible with	Raspberry Pi, Arduino
Special features	Adjustable sensitivity, hold time and pulse rate
Dimensions	32 x 24 x 23 mm
Scope of delivery	SEN-HC-SR501

## FURTHER SPECIFICATIONS

Supply voltage	5 V DC
Logic level	3 V
Pulse rate	Single or multiple (standard)

## FURTHER DETAILS

Article No.	SEN-HC-SR501
EAN	4250236820361
Customs tariff No.	8473302000



Published: 23.09.2020